

28.37

218

219

220

437m<sup>2</sup>

GRAPESTONE ROAD

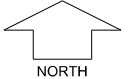
28.00

27.75

**KARMARA**  
PIARA WATERS

STAGE 1

SCALE 1:250



**MNG** Ref: 96269lip-017e Date: 24/01/2018  
All dimensions and areas are subject to survey. The particulars on this brochure are supplied for information only and shall not be taken as a representation in any respect on the part of the Vendor or its agent. Authorities should be consulted when services are contained within lot boundaries as building restrictions may apply. All retaining walls and associated easements are shown exaggerated for clarity.  
Engineering still to be finalised and subject to change.

**LEGEND**

- |  |                      |  |  |  |                            |
|--|----------------------|--|--|--|----------------------------|
|  | WATER                |  | POWER DOME - MINI PILLAR                                 |  | TOP OF KERB HEIGHT         |
|  | WATER METER          |  | POWER DOME - UNIVERSAL PILLAR                            |  | SPOT LEVEL                 |
|  | VALVE / HYDRANT      |  | STREETLIGHTS   |  | PAD LEVEL                  |
|  | SEWER / MANHOLE      |  | Western Power Padmount Site & 129BA Restrictive Covenant |  | ROAD LEVEL                 |
|  | DRAINAGE             |  | Western Power Padmount Site & 70A Noise Compliance       |  | CONTOUR                    |
|  | SUBSOIL DRAINAGE PIT |  | RETAINING WALL   |  | NATIONAL BROADBAND NETWORK |
|  | BOLLARD              |  | FOOTPATH   |  | BUSHFIRE ATTACK LEVEL      |
|  |                      |  | DRAINAGE SWALE   |  |                            |