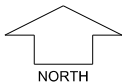


KARMARA
PIARA WATERS
STAGE 2



SCALE 1:250

MNG Ref: 96269lip-024e Date: 22/05/2018
All dimensions and areas are subject to survey. The particulars on this brochure are supplied for information only and shall not be taken as a representation in any respect on the part of the Vendor or its agent. Authorities should be consulted when services are contained within lot boundaries as building restrictions may apply. All retaining walls and associated easements are shown exaggerated for clarity.
Engineering still to be finalised and subject to change.

LEGEND

- | | | | | | |
|--|--|--|-------------------------------|--|----------------------------|
| | WATER | | POWER DOME - MINI PILLAR | | SPOT LEVEL |
| | WATER METER | | POWER DOME - UNIVERSAL PILLAR | | PAD LEVEL |
| | VALVE / HYDRANT | | STREETLIGHTS | | ROAD LEVEL |
| | SEWER / MANHOLE | | RETAINING WALL | | ROAD CONTOURS |
| | DRAINAGE | | FOOTPATH | | NATIONAL BROADBAND NETWORK |
| | SUBSOIL DRAINAGE PIT | | PADMOUNT SITE | | ACCESS RESTRICTION |
| | DRAINAGE HOUSING CONNECTION & EASEMENT | | ACCESS RESTRICTION | | BUSHFIRE ATTACK LEVEL |
| | BOLLARD | | BUSHFIRE ATTACK LEVEL | | CROSSOVER BY BUYER |