

108

109  
524m<sup>2</sup>

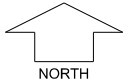
NICHOLSON ROAD

MARL WAY

GREYWACKE ENTRANCE

**KARMARA**  
PIARA WATERS  
STAGE 2

SCALE 1:250



**MNG.** Ref: 96269lip-024i Date: 06/09/2019  
All dimensions and areas are subject to survey. The particulars on this brochure are supplied for information only and shall not be taken as a representation in any respect on the part of the Vendor or its agent. Authorities should be consulted when services are contained within lot boundaries as building restrictions may apply. All retaining walls and associated easements are shown exaggerated for clarity.  
Engineering still to be finalised and subject to change.

**LEGEND**

- |                               |                    |                             |  |                            |
|-------------------------------|--------------------|-----------------------------|--|----------------------------|
| WATER                         | DRAINAGE           | POWER DOME MINI PILLAR      | DRAINAGE HOUSING CONNECTION & EASEMENT | TOP OF KERB HEIGHT         |
| WATER METER/ DEFERRED SERVICE | RETAINING WALL     | POWER DOME UNIVERSAL PILLAR | SUBSOIL DRAINAGE PIT                   | SPOT LEVEL                 |
| VALVE / HYDRANT               | FOOTPATH           | STREETLIGHTS                | BUSHFIRE ATTACK LEVEL                  | ROAD LEVEL                 |
| SEWER / MANHOLE               | CROSSOVER BY BUYER | BOLLARD                     | BAL 12.5                               | PAD LEVEL                  |
| ROAD CONTOURS                 | PADMOUNT SITE      | ACCESS RESTRICTION          | BAL 19                                 | BAL 29                     |
|                               |                    |                             | BAL 29                                 | NATIONAL BROADBAND NETWORK |