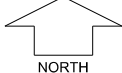


**KARMARA**  
PIARA WATERS  
**STAGE 2**



SCALE 1:250

**MNG**. Ref: 96269lip-024i Date: 06/09/2019  
All dimensions and areas are subject to survey. The particulars on this brochure are supplied for information only and shall not be taken as a representation in any respect on the part of the Vendor or its agent. Authorities should be consulted when services are contained within lot boundaries as building restrictions may apply. All retaining walls and associated easements are shown exaggerated for clarity.  
Engineering still to be finalised and subject to change.

**LEGEND**

- |  |  |  |                               |  |                            |
|--|--|--|-------------------------------|--|----------------------------|
|  | WATER                                  |  | POWER DOME - UNIVERSAL PILLAR |  | TOP OF KERB HEIGHT         |
|  | WATER METER/ DEFERRED SERVICE          |  | POWER DOME - MINI PILLAR      |  | SPOT LEVEL                 |
|  | VALVE / HYDRANT                        |  | STREETLIGHTS                  |  | PAD LEVEL                  |
|  | SEWER / MANHOLE                        |  | RETAINING WALL                |  | ROAD LEVEL                 |
|  | DRAINAGE                               |  | FOOTPATH                      |  | ROAD CONTOURS              |
|  | SUBSOIL DRAINAGE PIT                   |  | PADMOUNT SITE                 |  | NATIONAL BROADBAND NETWORK |
|  | DRAINAGE HOUSING CONNECTION & EASEMENT |  | ACCESS RESTRICTION            |  | CROSSOVER BY BUYER         |
|  | BOLLARD                                |  | BUSHFIRE ATTACK LEVEL         |  |                            |