

28.00

# CLAYSTONE LOOP

154

90° 12.5 28.09 90° 28.09 90° 28.09 90° 12.5 28.09 90°

155  
400m<sup>2</sup>

156

28.83

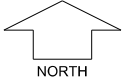
28.83

28.46

138

137

**KARMARA**  
PIARA WATERS  
**STAGE 2**



SCALE 1:250

**MNG** Ref: 96269lip-024i Date: 06/09/2019  
All dimensions and areas are subject to survey. The particulars on this brochure are supplied for information only and shall not be taken as a representation in any respect on the part of the Vendor or its agent. Authorities should be consulted when services are contained within lot boundaries as building restrictions may apply. All retaining walls and associated easements are shown exaggerated for clarity.  
Engineering still to be finalised and subject to change.

**LEGEND**

- WATER
- WATER METER/ DEFERRED SERVICE
- VALVE / HYDRANT
- SEWER / MANHOLE
- DRAINAGE
- SUBSOIL DRAINAGE PIT
- DRAINAGE HOUSING CONNECTION & EASEMENT
- BOLLARD
- POWER DOME - MINI PILLAR
- POWER DOME - UNIVERSAL PILLAR
- STREETLIGHTS
- RETAINING WALL
- FOOTPATH
- PADMOUNT SITE
- ACCESS RESTRICTION
- BUSHFIRE ATTACK LEVEL
- BAL 12.5
- BAL 19
- BAL 29
- TOP OF KERB HEIGHT
- SPOT LEVEL
- PAD LEVEL
- ROAD LEVEL
- ROAD CONTOURS
- NATIONAL BROADBAND NETWORK
- CROSSOVER BY BUYER